

Job Aid

DXi7500 Cabling Exercise

Released: 09/02/2008

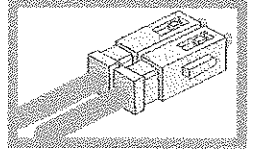
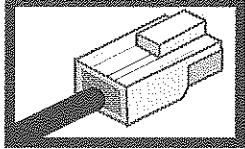
Version: 1.0

Entry Level System

All connections

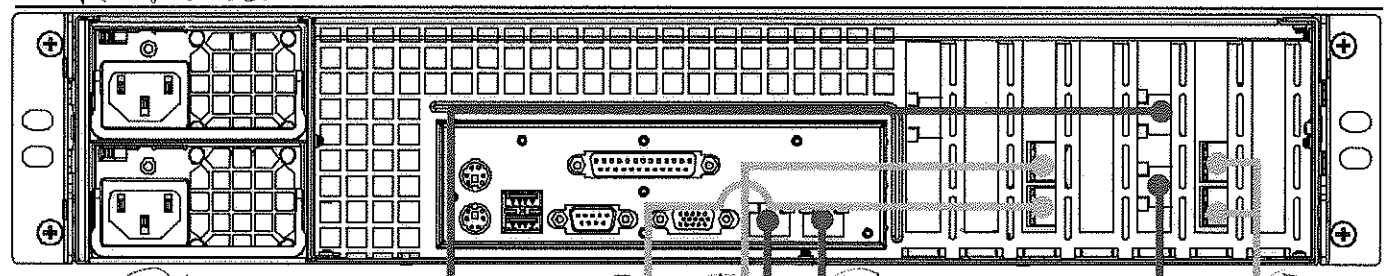
Ethernet Cable

Fibre Channel Cable

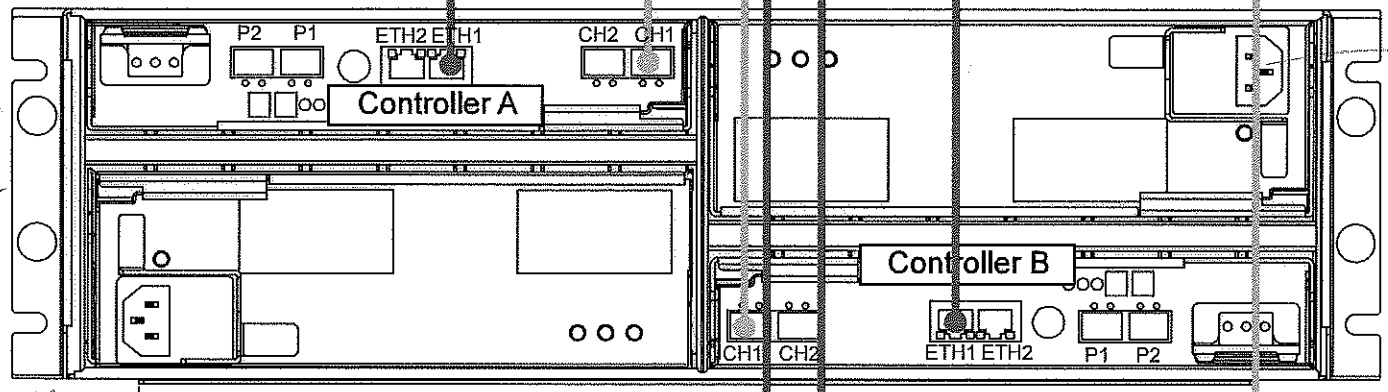


Rear View

Node



Array Module

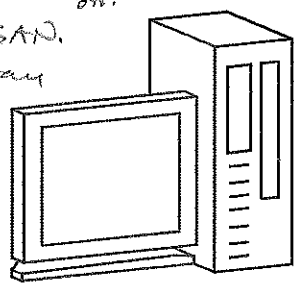


Don't skip steps

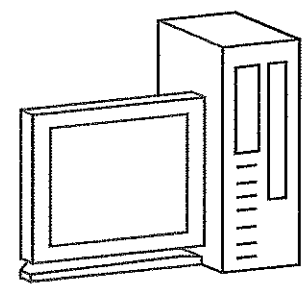
1 power source

Don't power on.

- 1 Connect each power supply to a power source.
- 2 Connect the FC cables ^{from node} to the customer SAN.
- 3 Connect the FC cables from node to array module.
- 4 Connect the Ethernet cables from node to customer LAN.
- 5 Connect the Ethernet cables from node to array modules.



Customer LAN



Customer SAN (Backup Host)

NOTES:

